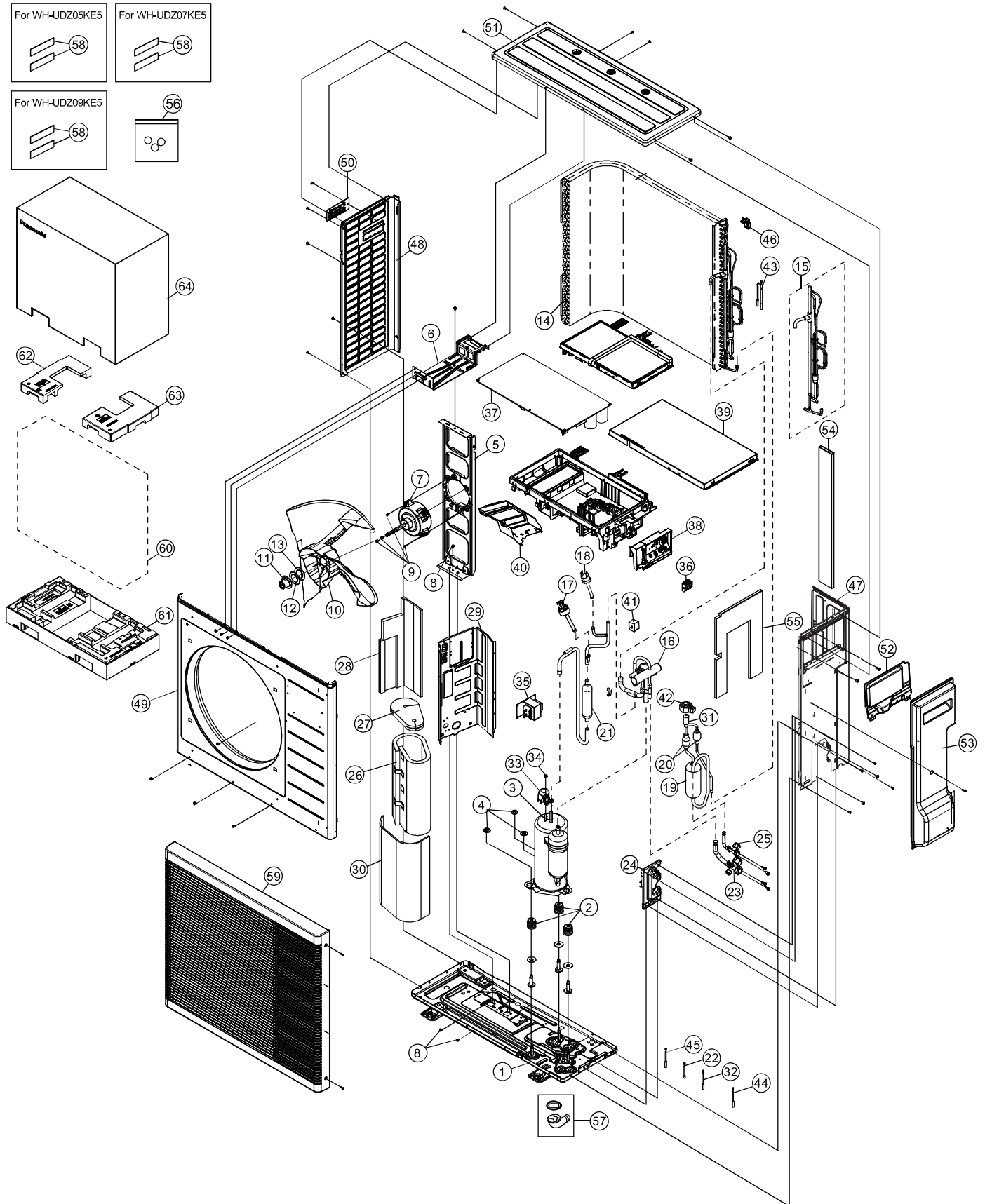


## 24.2.2 WH-UDZ05KE5 WH-UDZ07KE5 WH-UDZ09KE5



**Note:**

The above exploded view is for the purpose of parts disassembly and replacement. The non-numbered parts are not kept as standard service parts.

SAFETY	REF. NO.	DESCRIPTION & NAME	QTY.	WH-UDZ05KE5	WH-UDZ07KE5	REMARK
	1	BASE PAN ASSY	1	ACXD52K05210	←	
	2	ANTI - VIBRATION BUSHING	3	CWH50077	←	
⚠	3	COMPRESSOR	1	9RD220XBC21	←	O
	4	NUT - COMPRESSOR MOUNT	3	CWH561096	←	
	5	BRACKET FAN MOTOR	1	ACXD54-04490	←	
	6	PARTICULAR PLATE	1	CWD911802	←	
⚠	7	FAN MOTOR, DC 60W 3PH	1	L6CBYYL0422	←	O
	8	SCREW - BRACKET FAN MOTOR	3	ACXH55-07140	←	
	9	SCREW - FAN MOTOR MOUNT	4	CWH551323	←	
	10	PROPELLER FAN ASSY	1	CWH00K1006	←	
	11	NUT - PROPELLER FAN	1	CWH561092	←	
	12	WASHER	1	CWH571067	←	
	13	WASHER	1	CWH571068	←	
	14	CONDENSER	1	ACXB32C26350	←	
	15	MANIFOLD TUBE ASS'Y (CAP TUBE)	1	ACXT00C27650	←	
	16	4-WAYS VALVE	1	ACXB00-00140	←	O
⚠	17	HIGH PRESSURE SENSOR CN-HPS	1	CWA501463	←	O
	18	PRESSURE SWITCH	1	ACXA10-00640	←	O
	19	RECEIVER	1	CWB14017	←	
	20	STRAINER	2	CWB111063	←	
	21	DISCHARGE MUFFLER	1	CWB121013	←	
⚠	22	LEAD WIRE - CO. (CN-HPS)	1	ACXA60C94010	←	O
	23	3-WAYS VALVE	1	CWB011363	←	O
	24	HOLDER - COUPLING	1	CWH351228	←	
	25	2-WAYS VALVE	1	CWB021464	←	O
	26	SOUND PROOF MATERIAL	1	ACXG30-13230	←	
	27	SOUND PROOF MATERIAL	1	ACXG30-13240	←	
	28	SOUND PROOF MATERIAL	1	ACXG30-13310	←	
	29	SOUND - PROOF BOARD	1	ACXH15-03900	←	
	30	SOUND PROOF MATERIAL	1	ACXG30-13250	←	
	31	EXPANSION VALVE	1	CWB051029	←	O
⚠	32	SENSOR - CO. COMPRESSOR TEMP (CN-TANK)	1	ACXA50C17400	←	O
	33	TERMINAL COVER	1	CWH171039A	←	
	34	NUT - TERMINAL COVER	1	CWH7080300J	←	
⚠	35	REACTOR	1	G0C392J00027	←	O
⚠	36	TERMINAL BOARD ASS'Y (1,2,3)	1	CWA28K1076J	←	O
⚠	37	ELECTRONIC CONTROLLER - MAIN	1	ACXA73C91120R	ACXA73C91130R	O
	38	PLATE - C.B. COVER	1	CWH102361	←	
	39	CONTROL BOARD COVER	1	ACXH13-09170	←	
	40	CONTROL BOARD COVER - COMPLETE	1	ACXH13K00830	←	
⚠	41	V-COIL COMP. (4 WAY VALVE)	1	ACXA43C00250	←	O
⚠	42	V-COIL CO. (EXPANSION VALVE)	1	A43C2342	←	O
⚠	43	SENSOR - CO. OUTDOOR AIR & PIPE TEMP (CN-TH1)	1	CWA50C2822	←	O

SAFETY	REF. NO.	DESCRIPTION & NAME	QTY.	WH-UDZ05KE5	WH-UDZ07KE5	REMARK
	44	SENSOR - CO. DISCHARGE (CN-DIS)	1	CWA50C2722	←	O
	45	SENSOR - CO. EVA EXIT (CN-TH3)	1	ACXA50C14960	←	O
	46	HOLDER - SENSOR	1	CWH321096G	←	
	47	CABINET SIDE PLATE CO.	1	ACXE04-13310G	←	
	48	CABINET SIDE PLATE (L)	1	CWE041585G	←	
	49	CABINET FRONT PLATE - CO.	1	ACXE06C04610	←	
	50	HANDLE	1	CWE161010G	←	
	51	CABINET TOP PLATE	1	CWE031083G	←	
	52	CONTROL BOARD COVER	1	CWH131332	←	
	53	CONTROL BOARD COVER - COMPLETE	1	ACXH13C06350	←	
	54	SOUND PROOF MATERIAL	1	ACXG30-13260	←	
	55	SOUND PROOF MATERIAL	1	ACXG30-13270	←	
	56	ACCESSORY COMP. (CAP)	1	ACXH82C09831	←	
	57	ACCESSORY COMP. (DRAIN ELBOW)	1	ACXH82C21740	←	
	58	MODEL LABEL	2	ACXF85-99610	ACXF85-99620	
	59	DISCHARGE GRILLE - COMPLETE	1	ACXE20C07970	←	
	60	BAG	1	CWG861154	←	
	61	BASE BOARD - COMPLETE	1	ACXG62C02810	←	
	62	SHOCK ABSORBER	1	ACXG70-15180	←	
	63	SHOCK ABSORBER	1	ACXG70-15190	←	
	64	C.C. CASE	1	ACXG50-61910	←	

**Note:**

- All parts are supplied from PAPAMY, Malaysia (Vendor Code: 00029488).
- "O" marked parts are recommended to be kept in stock.

SAFETY	REF. NO.	DESCRIPTION & NAME	QTY.	WH-UJ209KE5	REMARK
	1	BASE PAN ASSY	1	ACXD52K05210	
	2	ANTI - VIBRATION BUSHING	3	CWH50077	
⚠	3	COMPRESSOR	1	9RD220XBC21	O
	4	NUT - COMPRESSOR MOUNT	3	CWH561096	
	5	BRACKET FAN MOTOR	1	ACXD54-04490	
	6	PARTICULAR PLATE	1	CWD911802	
⚠	7	FAN MOTOR, DC 60W 3PH	1	L6CBYYL0422	O
	8	SCREW - BRACKET FAN MOTOR	3	ACXH55-07140	
	9	SCREW - FAN MOTOR MOUNT	4	CWH551323	
	10	PROPELLER FAN ASSY	1	CWH00K1006	
	11	NUT - PROPELLER FAN	1	CWH561092	
	12	WASHER	1	CWH571067	
	13	WASHER	1	CWH571068	
	14	CONDENSER	1	ACXB32C26350	
	15	MANIFOLD TUBE ASS'Y (CAP TUBE)	1	ACXT00C27650	
	16	4-WAYS VALVE	1	ACXB00-00140	O
⚠	17	HIGH PRESSURE SENSOR CN-HPS	1	CWA501463	O
	18	PRESSURE SWITCH	1	ACXA10-00640	O
	19	RECEIVER	1	CWB14017	
	20	STRAINER	2	CWB111063	
	21	DISCHARGE MUFFLER	1	CWB121013	
⚠	22	LEAD WIRE - CO. (CN-HPS)	1	ACXA60C94010	O
	23	3-WAYS VALVE	1	CWB011363	O
	24	HOLDER - COUPLING	1	CWH351228	
	25	2-WAYS VALVE	1	CWB021464	O
	26	SOUND PROOF MATERIAL	1	ACXG30-13230	
	27	SOUND PROOF MATERIAL	1	ACXG30-13240	
	28	SOUND PROOF MATERIAL	1	ACXG30-13310	
	29	SOUND - PROOF BOARD	1	ACXH15-03900	
	30	SOUND PROOF MATERIAL	1	ACXG30-13250	
	31	EXPANSION VALVE	1	CWB051029	O
⚠	32	SENSOR - CO. COMPRESSOR TEMP (CN-TANK)	1	ACXA50C17400	O
	33	TERMINAL COVER	1	CWH171039A	
	34	NUT - TERMINAL COVER	1	CWH7080300J	
⚠	35	REACTOR	1	G0C392J00027	O
⚠	36	TERMINAL BOARD ASS'Y (1,2,3)	1	CWA28K1076J	O
⚠	37	ELECTRONIC CONTROLLER - MAIN	1	ACXA73C91140R	O
	38	PLATE - C.B. COVER	1	CWH102361	
	39	CONTROL BOARD COVER	1	ACXH13-09170	
	40	CONTROL BOARD COVER - COMPLETE	1	ACXH13K00830	
⚠	41	V-COIL COMP. (4 WAY VALVE)	1	ACXA43C00250	O
⚠	42	V-COIL CO. (EXPANSION VALVE)	1	A43C2342	O
⚠	43	SENSOR - CO. OUTDOOR AIR & PIPE TEMP (CN-TH1)	1	CWA50C2822	O

SAFETY	REF. NO.	DESCRIPTION & NAME	QTY.	WH-UDZ09KE5	REMARK
	44	SENSOR - CO. DISCHARGE (CN-DIS)	1	CWA50C2722	O
	45	SENSOR - CO. EVA EXIT (CN-TH3)	1	ACXA50C14960	O
	46	HOLDER - SENSOR	1	CWH321096G	
	47	CABINET SIDE PLATE CO.	1	ACXE04-13310G	
	48	CABINET SIDE PLATE (L)	1	CWE041585G	
	49	CABINET FRONT PLATE - CO.	1	ACXE06C04610	
	50	HANDLE	1	CWE161010G	
	51	CABINET TOP PLATE	1	CWE031083G	
	52	CONTROL BOARD COVER	1	CWH131332	
	53	CONTROL BOARD COVER - COMPLETE	1	ACXH13C06350	
	54	SOUND PROOF MATERIAL	1	ACXG30-13260	
	55	SOUND PROOF MATERIAL	1	ACXG30-13270	
	56	ACCESSORY COMP. (CAP)	1	ACXH82C09831	
	57	ACCESSORY COMP. (DRAIN ELBOW)	1	ACXH82C21740	
	58	MODEL LABEL	2	ACXF85-99630	
	59	DISCHARGE GRILLE - COMPLETE	1	ACXE20C07970	
	60	BAG	1	CWG861154	
	61	BASE BOARD - COMPLETE	1	ACXG62C02810	
	62	SHOCK ABSORBER	1	ACXG70-15180	
	63	SHOCK ABSORBER	1	ACXG70-15190	
	64	C.C. CASE	1	ACXG50-61910	

**Note:**

- All parts are supplied from PAPAMY, Malaysia (Vendor Code: 00029488).
- "O" marked parts are recommended to be kept in stock.